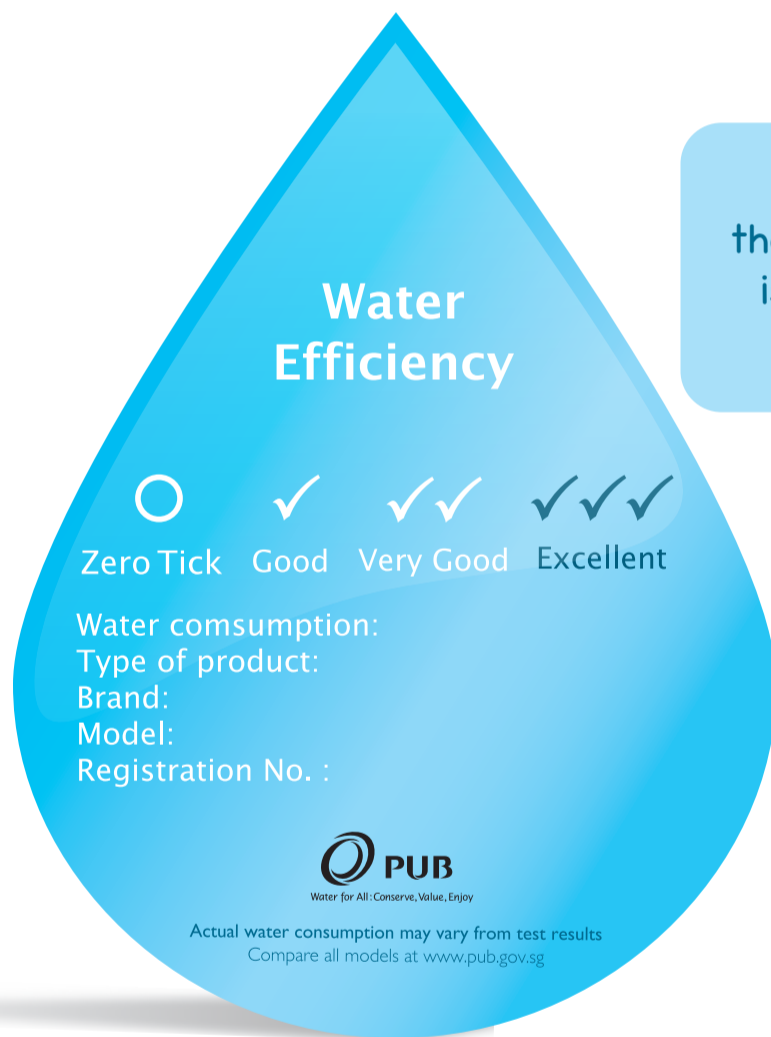
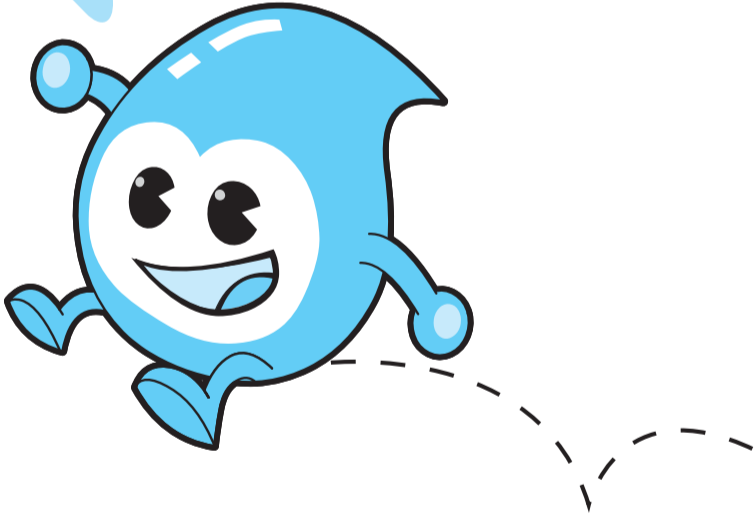


# LOOK OUT For THIS LABEL

From July 2009, the new Mandatory Water Efficiency Labelling Scheme (Mandatory WELS) comes into effect. Under the scheme, taps and mixers, dual-flush low capacity flushing cisterns (LCFCs), urinal flush valves and waterless urinals are labelled according to how water efficient they are. In addition, LCFCs to be installed in all new premises and existing premises undergoing renovation shall be dual flush type. Showerheads and clothes washing machines will also continue to be labelled under the existing Voluntary Water Efficiency Labelling Scheme (Voluntary WELS).



The more ticks on the label, the more water-efficient a product is. If a product has a Zero Tick, it is not water-efficient.



All of us have a part to play in ensuring that Singapore has sufficient water. When we choose a water-efficient product, we not only conserve water but also save money in the long run. So, choose a water-efficient product today!

Please visit [www.pub.gov.sg/wels](http://www.pub.gov.sg/wels) for more information on how to conserve water and a complete listing of water-efficient products.

**PUB 24hr CALL CENTRE: 1800-284 6600**



Water for All: Conserve, Value, Enjoy